

A landscape approach to 'Keeping Rivers Cool' (Figures)

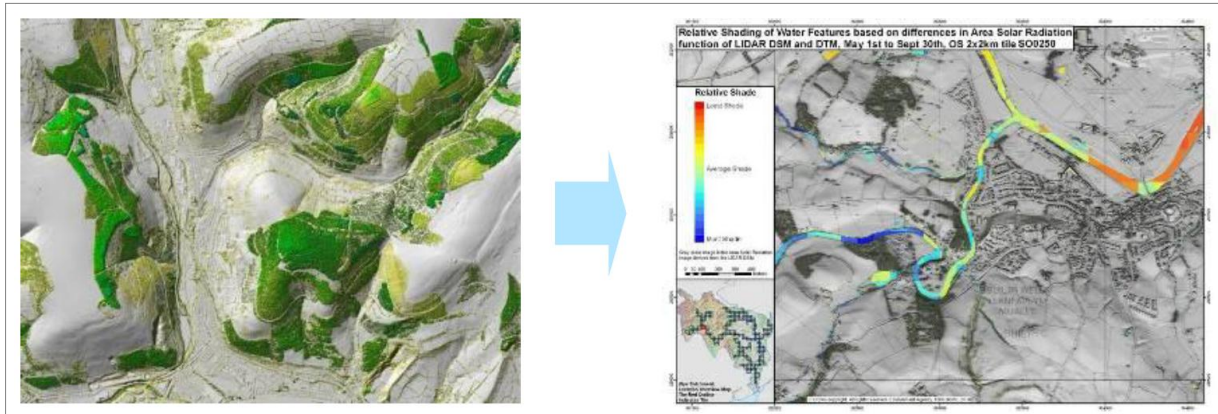


Figure 1: Environment Agency LiDAR (left) and Shade Map (right).

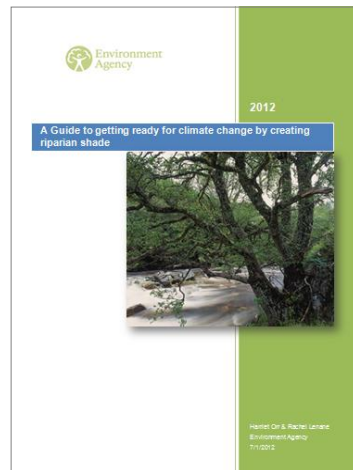


Figure 2: Keeping Rivers Cool Guidance Manual (Environment Agency, 2012).

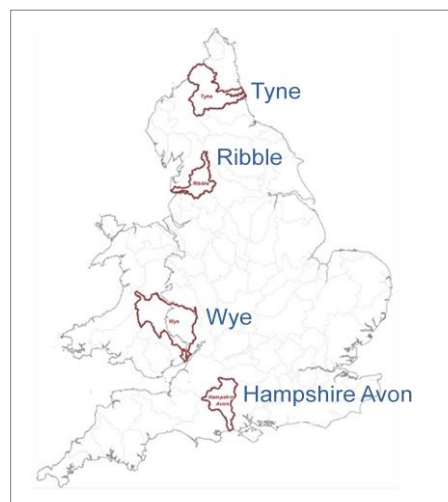


Figure 3: Four pilot catchments (Tyne, Ribble, Wye, and Hampshire Avon).