

Can we mitigate agricultural impacts on freshwater biodiversity and enhance ecosystem services at a landscape scale? First results from the Water Friendly Farming project, UK

Jeremy Biggs and Chris Stoate (Pond Conservation and Game & Wildlife Conservation Trust)

Figure 1. Location of the project study area and experimental catchments

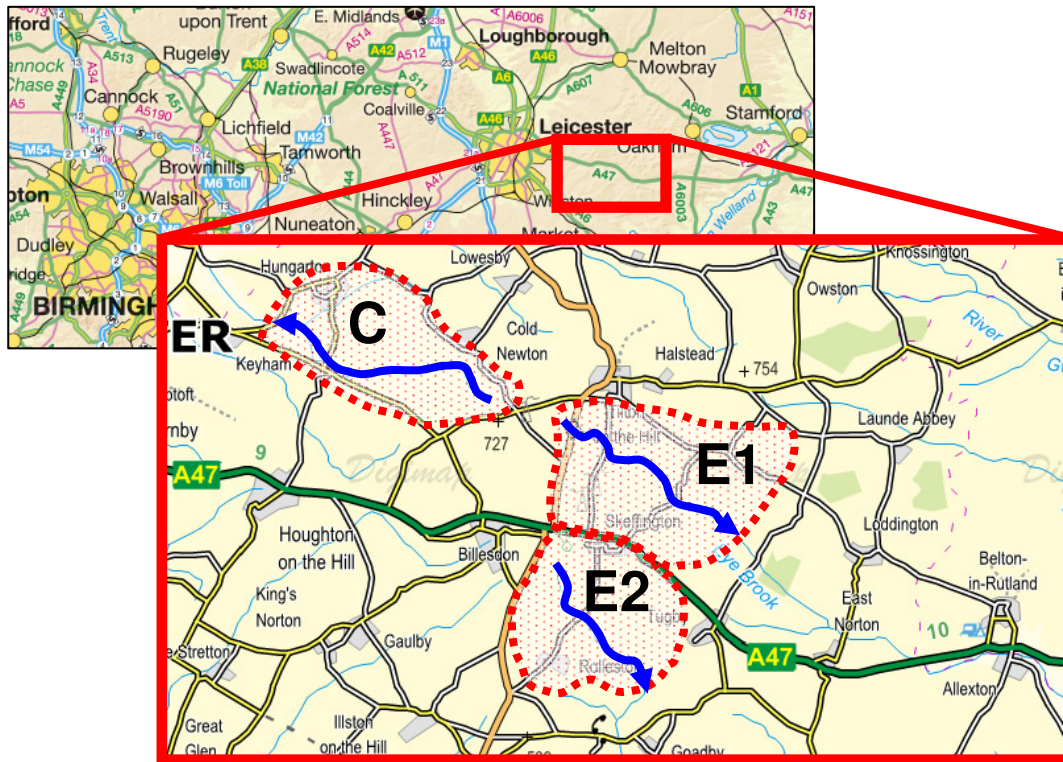


Figure 2. Wetland plant species richness (gamma diversity) in the three waterbody types present in the study catchments. Overall, there is a high similarity between catchments with ponds supporting over 85% of all the wetland plant species seen. Results shown are for 2010; the presentation will discuss patterns over three years of the baseline (2010-2012), relationships with physico-chemical heterogeneity and the implications for catchment management.

