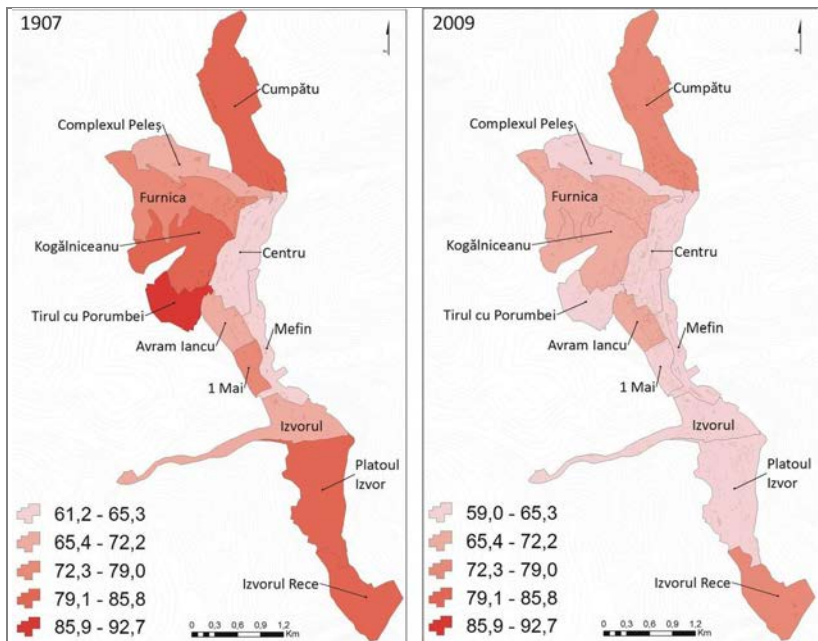
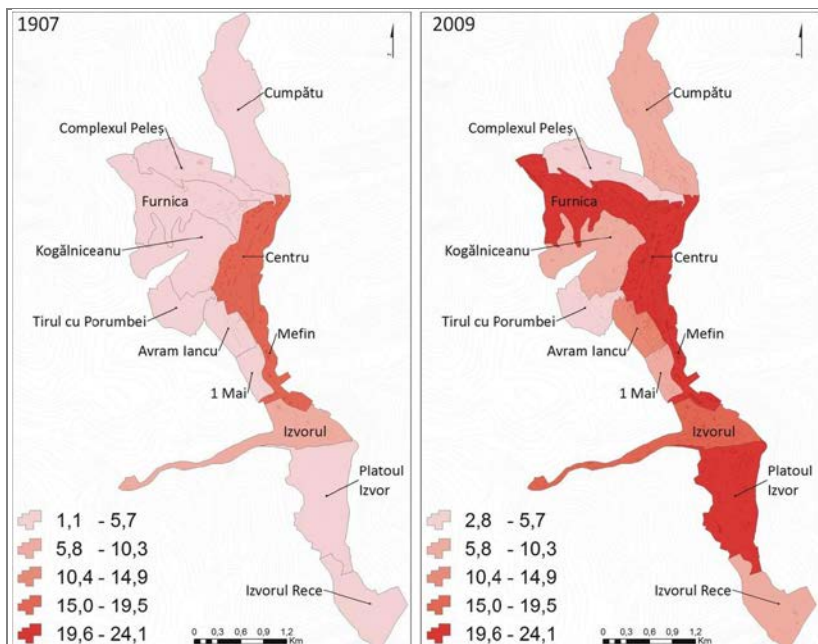


The distribution of values computed for the *AGREG* landscape metric in the interval 1907-2009, based on data extracted from the cartographic materials: the town plans from 1907 and 2009 at the scale 1:5,000



*CONTAG* metric's values between 1907 and 2009. The minimum values are associated with the centre area and the industrial one. A certain state of equilibrium is associated with the industrial area which didn't suffer important changes.



*SPLIT* metric's values between 1907 and 2009.